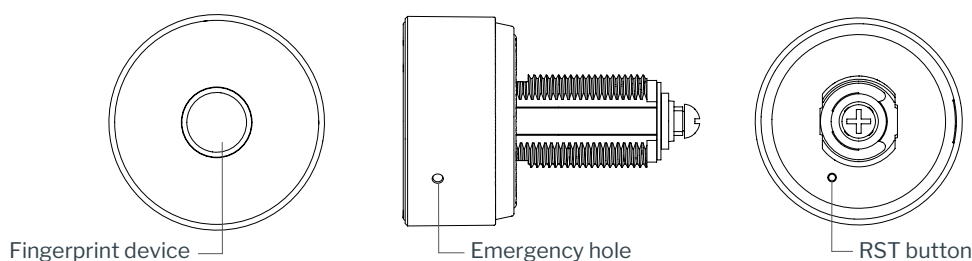




Keyfree 400

Biometric Lock Instructions



1. How to Operate

Unlocking the Lock:

1. Place a registered fingerprint on the scanner for about 1 second.
2. The buzzer will emit a long sound, and the unlocking indicator light will turn on.
3. Turn the knob within 3 seconds to open the lock.

Locking the Lock:

1. Rotate the knob to lock.

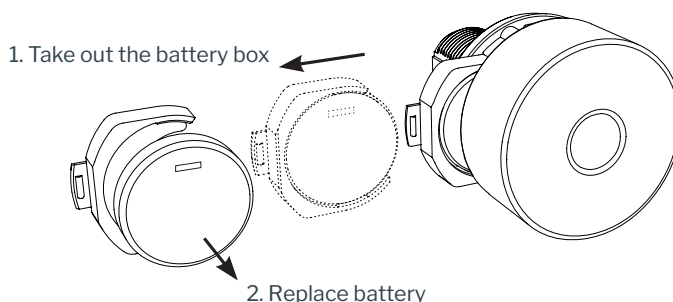
Notes:

1. The factory default fingerprint database is empty; any fingerprint can unlock the lock.
2. If an unregistered fingerprint is used, the buzzer will emit three short beeps.
3. If the red low-voltage indicator is on, replace the battery immediately.
4. When the yellow light is on, the unlocking sound and the whirring sound occur, the electronic lock is already in a low-voltage working. Please replace the new battery in time.

2. Install / Replace Battery

Unlocking the Lock:

1. Press the emergency hole to remove the lock cover.
2. Take out the battery box.
3. Replace the CR2450 battery.
4. Reinsert the battery box and cover.
5. Ensure proper battery polarity to avoid malfunction.



3. Manage Fingerprints

- The lock allows up to 8 user fingerprints.
- Management fingerprints can add and delete user fingerprints.

4. Adding a Management Fingerprint

There are two ways to add a management fingerprint:

Method 1 (When No Fingerprints Are Registered):

1. Place a fingerprint on the scanner for 1 second. A long beep and green light will indicate readiness.
2. Place the same fingerprint again for 3 seconds. Two short beeps and a flashing green light confirm setup mode.
3. Place the same fingerprint six times until a short beep confirms successful registration.
4. If three short beeps are heard, reattempt registration with a different finger.

Method 2 (Using the Reset Button):

1. Press the RST button. A long beep and flashing green light will indicate setup mode.
2. Place the new management fingerprint on the scanner six times until a short beep confirms successful registration.
3. If three short beeps are heard, reattempt registration with a different finger.

Notes:

Management fingerprints have the authority to add or delete user fingerprints.

5. Adding a User Fingerprint

1. Place the management fingerprint on the scanner for 1 second; a long beep and green light will indicate readiness.
2. Place the management fingerprint again for 1 second until two short beeps and a flashing green light confirm readiness.
3. Place the new user fingerprint six times until a short beep confirms successful registration.
4. If three short beeps are heard, reattempt registration.

6. Delete All User Fingerprints

1. Place the management fingerprint on the scanner; a long beep and the unlocking indicator light will turn on.
2. Place the management fingerprint again until two short beeps and a flashing light occur.
3. Place the management fingerprint a third time; a long beep confirms deletion of all user fingerprints.

7. How to Delete All Fingerprints

1. Place the management fingerprint on the scanner; a long beep and the unlocking indicator light will turn on.
2. Place the management fingerprint again until two short beeps and a flashing light occur.
3. Place the management fingerprint a third time; a long beep will be heard.
4. Place the management fingerprint once more for 3 seconds to delete all fingerprints.

8. Switch Between Public and Private Mode

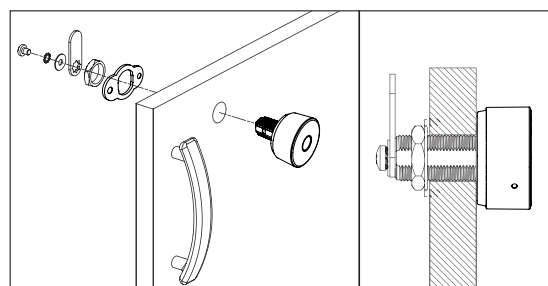
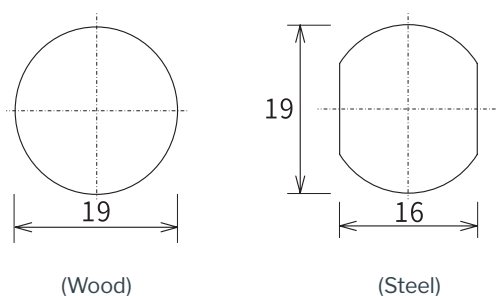
1. Remove the battery.
2. Insert a pin into the reset hole while reinserting the battery.
3. Release the pin when you hear:
 - One long beep for private mode.
 - Three long beeps for public mode.

Notes:

- Management fingerprints remain valid in both modes.

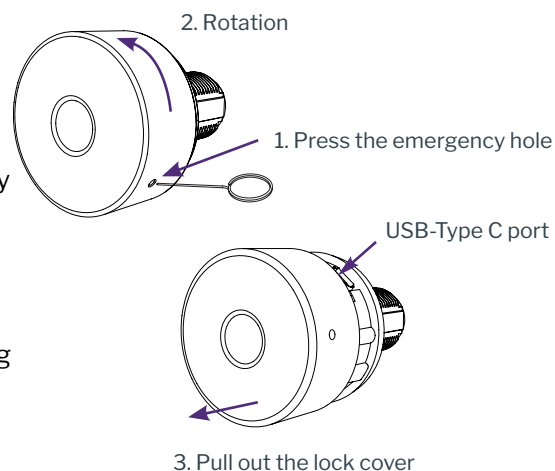
9. Fixing Hole Size

- Ensure the door hole size meets installation requirements.
- The hole size for wood and steel installations must follow the given measurements.



10. Features

- **Reset Function:** Insert a pin into the reset hole to restore factory settings.
- **Low Power Prompt:** The red indicator light signals low battery voltage.
- **Emergency Power Supply:** If the battery is depleted, an external power bank can be used.
- **Low Power Prompt:** When the yellow light is on, the unlocking sound and the whirring sound occur, the electronic lock is already in a low-voltage working state at this time. Please replace the new battery in time.



Note: Low battery voltage may cause the electronic lock to fail to unlock.

11. Technical Specifications

- Fingerprint Device: Semiconductor fingerprint reader
- Management Fingerprints: Stores up to 2 management fingerprints
- User Fingerprints: Stores up to 8 fingerprints
- Working Temperature: -20°C to +55°C
- Storage Temperature: -40°C to +55°C
- Working Humidity: 10% - 85%
- Static Current: <40µA
- Dynamic Current: >130mA
- Power Supply: CR2450 battery
- Battery Life: Approximately 1 year